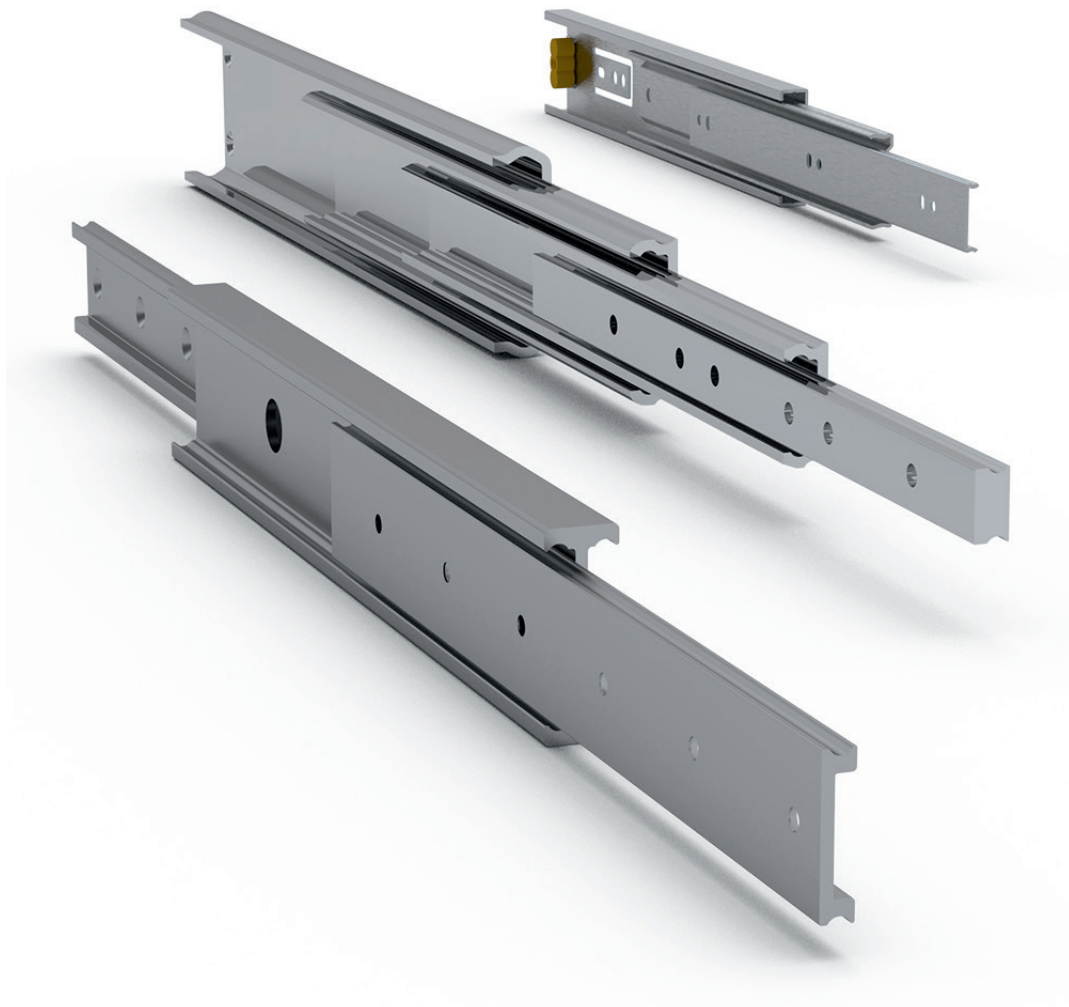


TECHNICAL INFORMATION

TELESCOPIC RAIL LIGHT



Information in this document is subject to change. Owing to continued product development, Rollco reserves the right to make alterations without prior notice. Every care has been taken to ensure the accuracy of the information, but no liability can be accepted for any errors or omissions.

All information and content included in this document, such as text, and images, are property of Rollco. Any reproduction, even partial, is allowed only by written permission by Rollco.

Product overview

Rollco Telescopic Rails Light are intended for small and medium loads. The telescopic rails are delivered as standard with extension of up to 140% and are available in lengths from 300 mm to 1500 mm. We also offer special versions with shorter or longer rails.

The rails are supplied in different materials. We recommend rolled steel for smaller loads. Cold drawn steel or aluminium are ideal for medium loads. For applications in special environments, we offer stainless steel, zinc-plated or chemically nickel-plated rails. Lithium based grease is used for lubrication.

Characteristics

- Loads from 26 kg/pair to 340 kg/pair.
- Extensions from 300 mm up to 1500 mm.
- 100% and 140% extension as standard.
- Lock function in and out available on some models.
- Compact and easy to assemble.
- Standard in aluminium, steel or stainless steel. Zinc-plated or chemically nickel-plated on request.
- Operating temperatures up to 80° C (for higher temperatures, contact Rollco).

Application areas

- Train doors
- Building and machining industry
- Automotive industry
- Packaging machines
- Special machinery

Selecting guide

There are some factors to consider when selecting a telescopic rail. If you have any questions, please don't hesitate to contact us. We will help you to find the right solution for your application.

- What is the load of the unit?
- Will your unit be exposed for side loads?
- Is the distance between the pair of slides very large (> two times the closed length of the slides)?
- Do you need 100% extension?
- Is it a horizontal movement?
- Service unit with limited amount of movements or telescopic solution for automation with a large quantity of movements/day?

Customised telescopic rails

We also offer a wide variety of customised telescopic slides to meet specific requirements, for example heavier loads, longer or shorter movements and extensions from 0 to over 300%. For applications, which need very high stiffness we recommend telescopic rails made from hardened bearing steel like DSS, DE, ASN and DBN. Other special materials or surface treatments are also available. Furthermore we can provide solutions for vertical movements, automation etc.

Please contact us for more information or see our product range Telescopic Rail Heavy.

**ALWAYS THE RIGHT
SOLUTION AT THE RIGHT TIME.**

With reliability, competence and commitment Rollco rapidly delivers the right solutions and components to create safe and cost-effective automation and linear movement.

ROLLCO

LINEAR SOLUTIONS **YOUR** WAY

Rollco AB

Box 22234
Ekvändan 3
250 24 Helsingborg
Sweden
Tel. +46 42 15 00 40
www.rollco.se

Rollco A/S

Skomagervej 13 E
7100 Vejle
Denmark
Tel. +45 75 52 26 66
www.rollco.dk

Rollco Oy

Sarankulmankatu 12
33900 Tampere
Finland
Tel. +358 207 57 97 90
www.rollco.fi

Rollco Norge AS

Industrigata 6
3414 Lierstrada
Norway
Tel. +47 32 84 00 34
www.rollco.no

Rollco Taiwan

No. 28, Lane 125, Da-an Road
Shulin District 238
New Taipei City, Taiwan
Tel. +886-2-8687-2726
Fax +886-2-8687-2720
www.rollco-tw.com